



Brunswick Square, Gloucester GL1 1UN

£185,000



Brunswick Square, Gloucester GL1 1UN

- No onward chain
- Luxury duplex two bedroom apartment
- Spacious living accommodation with character features throughout
- Matte grey contemporary kitchen with integrated appliances
- High end bathroom finish rainfall shower fittings

£185,000

Accommodation

Spacious entrance provides access to both the living room, with charming feature fireplace surround and traditional high Georgian ceilings, alongside the modern finished matt grey fitted kitchen with gas hob and low level integrated oven. Generous Georgian sash windows provide a bright and airy feel to the second floor, which continues down the dogleg stairs to the first floor. Two spacious double bedrooms continue to add to the property, alongside a spacious walk in wardrobe to the master and fitted wardrobe in the second, the apartment is completed with the well appointed family bathroom with fully tiled bath and additional shower wand.

Outside

Parking for one is found to the rear of the property on a first come first served basis alongside a small communal garden. Additional council permit parking can be located in Brunswick Square, alongside

access to the residence central square park which provides a pleasant area to enjoy with mature shrubs and well appointed borders.

Location

Tucked away in the quiet location of Brunswick Square, the characterful Georgian townhouse overlooks the square gardens with residential permit parking surrounding. Approximately quarter of a mile from the City Centre Gloucester offers various amenities, shopping and transport facilities throughout whilst The Gloucester Quays development offers a range of restaurants, cinema and bars only half a mile.

Council Tax, Services & Tenure

Gloucester City Council - Tax Band A.
Mains water, drainage, electric and gas.
Leasehold - Estimated charge of circa £1000 to £1200 per year to include ground rent and service charge, Lease length of 125 years from 2019.

* Details correct as of 01/02/21 *



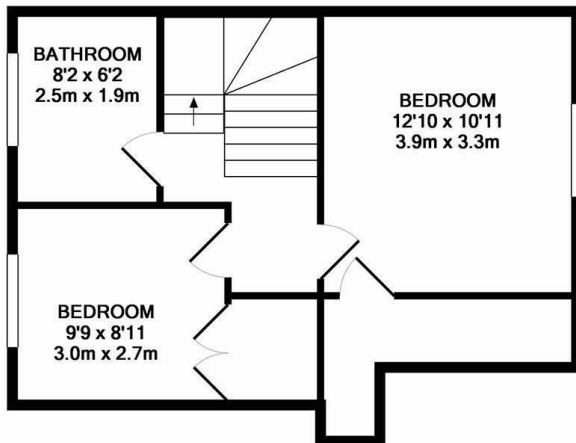
Unit C Barge Arm East, Gloucester Docks, GL1 2DQ

01452 398010

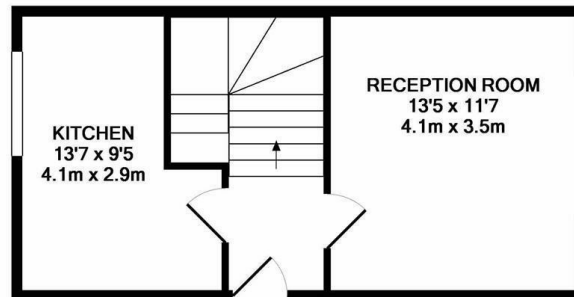
docks@naylorpowell.com

www.naylorpowell.com





LOWER GROUND FLOOR



GROUND FLOOR

Whilst every attempt has been made to ensure the accuracy of the floor plan contained here, measurements of doors, windows, rooms and any other items are approximate and no responsibility is taken for any error, omission, or mis-statement. This plan is for illustrative purposes only and should be used as such by any prospective purchaser. The services, systems and appliances shown have not been tested and no guarantee as to their operability or efficiency can be given

Made with Metropix ©2019

Disclaimer: These particulars do not form part of any contract and no responsibility is accepted for any errors or omissions in any statement made, whether verbally or written for or on behalf of Naylor Powell.

Floorplans have been prepared for identification purposes only, they are not to scale and no guarantee can be given as to their accuracy.

Prospective purchasers please be aware none of the appliances, boiler, heaters etc. which may have been mentioned in these particulars have been tested and no guarantee can be given that they are in working order. Prospective purchasers should arrange for such items to be tested at their own expense.

